

# DumpsReview



## Latest Dumps Reviews

Disclaimer Policy: The site does not guarantee the content of the comments. Because of the different time and the changes in the scope of the exam, it can produce different effect. Before you purchase the dump, please carefully read the product introduction from the page. In addition, please be advised the site will not be responsible for the content of the comments and contradictions between users.



My friends highly recommend dumpsreview exam materials for my C4090-454 exams. I used and it is really great. Thanks!!!

Richard



I am quite pleased with your dump. I recommended your C2010-040 test materials to all of my students. Your dump can help them prepare their exam well.

Gary



Really recommend buying this for 1z0-062 exam. I recently passed the exam using dumpsreview exam dumps.

Marico



This is an excellent dump. I used dumpsreview 312-75 exam dump to study for my exam and passed 312-75 exam today. Thank you so much!

Webb

<http://www.dumpsreview.com>

An excellent company provide valid dumps vce & exam review

**Exam** : **300-208**

**Title** : **Implementing Cisco Secure  
Access Solutions**

**Vendor** : **Cisco**

**Version** : **DEMO**

**NO.1** A security administrator must design posture remediation services for a company's Macintosh user base running posture agent. Which Cisco ISE remediation option can the engineer utilize to accomplish this task?

- A. file remediation
- B. launch program remediation
- C. WSUS remediation
- D. AV remediation

**Answer:** D

Explanation

Explanation/Reference

The following table provides a list of posture remediation options that are supported by the ISE Posture Agents for Windows and Macintosh, and the Web Agent for Windows.

ISE Posture Agent for Windows	ISE Posture Agent for Macintosh OS X
Message Text (Local Check)	Message Text (Local Check)
URL Link (Link Distribution)	URL Link (Link Distribution)
File Distribution	—
Launch Program	—
Antivirus Definition Update	Antivirus Live Update
Antispyware Definition Update	Antispyware Live Update
Patch Management Remediation (AC 4.1 - and ISE 1.4)	—
Windows Update	—
WSUS	—

[https://www.cisco.com/c/en/us/td/docs/security/ise/2-4/admin\\_guide/b\\_ise\\_admin\\_guide\\_24/b\\_ise\\_admin\\_guide\\_24\\_new\\_chapter\\_010111.html](https://www.cisco.com/c/en/us/td/docs/security/ise/2-4/admin_guide/b_ise_admin_guide_24/b_ise_admin_guide_24_new_chapter_010111.html)

**NO.2** Which two protocols are supported with the Cisco IOS Device Sensor? (Choose two.)

- A. NetFlow
- B. Cisco Discovery Protocol
- C. RADIUS
- D. SNMP
- E. LLDP

**Answer:** B,E

Explanation

Explanation/Reference

Device Sensor feature is used to gather raw endpoint data from network devices using protocols such

as Cisco Discovery Protocol (CDP), Link Layer Discovery Protocol (LLDP), and DHCP. The endpoint data is made available to registered clients in the context of an access session.

[https://www.cisco.com/c/en/us/td/docs/switches/lan/catalyst3750/software/release/15-0\\_1\\_se/device\\_sensor/guide/sensor\\_guide.html#wp1087591](https://www.cisco.com/c/en/us/td/docs/switches/lan/catalyst3750/software/release/15-0_1_se/device_sensor/guide/sensor_guide.html#wp1087591)

**NO.3** With which two appliance-based products can Cisco Prime infrastructure integrate to perform centralized management?

- A. Cisco email security appliance
- B. Cisco wireless location appliance
- C. Cisco Mobility Services Engine
- D. Cisco ISE
- E. Cisco content security appliance

**Answer:** C,D

**NO.4** Which three ISE posture remediation actions are supported by the Web Agent for Windows? (Choose three.)

- A. Message text
- B. Automatic Remediation
- C. File Distribution
- D. AV definition update
- E. Launch Program
- F. URI Link

**Answer:** A,C,F

**NO.5** A security engineer is deploying Cisco ISE. Which feature must the engineer enable within the general node settings to enable guest services?

- A. profiling services
- B. monitoring services
- C. pxGrid services
- D. session services

**Answer:** A

**NO.6** What three changes require restarting the application service on an ISE node? (Choose three.)

- A. Installing the root CA certificate.
- B. Changing the guest portal default port settings
- C. Registering a node.
- D. Changing the primary node to standalone.
- E. Adding a network access device.
- F. Promoting the administration node.

**Answer:** C,D,F

**NO.7** Which two types of personal device portals are supported on a Cisco ISE? (Choose two.)

- A. blacklist

- B. end-user
- C. My Devices
- D. Hot-spot Guest
- E. whitelist

**Answer:** A,C

Explanation

Explanation/Reference

<https://www.cisco.com/c/en/us/td/docs/security/ise/2->

[1/admin\\_guide/b\\_ise\\_admin\\_guide\\_21/b\\_ise\\_admin\\_guide\\_20\\_chapter\\_01111.pdf](https://www.cisco.com/c/en/us/td/docs/security/ise/2-1/admin_guide/b_ise_admin_guide_21/b_ise_admin_guide_20_chapter_01111.pdf)

**NO.8** Which two options can a sponsor select to create bulk guest accounts from the sponsor portal?  
(Choose two.)

- A. Random
- B. Monthly
- C. Daily
- D. Imported
- E. Yearly
- F. Known

**Answer:** A,D

**NO.9** Which description of the purpose of the Continue option in an authentication policy rule is true?

- A. It allows Cisco ISE to proceed to the authorization policy regardless of authentication pass/fail.
- B. It sends an authentication to the selected identity store.
- C. It allows Cisco ISE to check the list of rules in an authentication policy until there is a match.
- D. It sends an authentication to the next subrule within the same authentication rule.
- E. It causes Cisco ISE to ignore the NAD because NAD will treat the Cisco ISE server as dead.

**Answer:** A

**NO.10** Refer to the exhibit.

```
Switch(config)# interface gigabitethernet2/0/1
Switch(config-if)# dot1x port-control auto
Switch(config-if)# dot1x host-mode multi-host
```

Which statement describes this switch configuration?

- A. The switch port begins in the unauthorized state and does not allow EAPPOL, Cisco Discovery Protocol, and STP traffic.
- B. 802.1x is enabled on the switch port and the switch port ignores all traffic
- C. 802.1x is disabled on the switch port and all traffic is allowed as normal without restriction

**D.** The switch port begins in the unauthorized state and allows only EAPPOL, Cisco Discovery Protocol, and STP traffic.

**Answer:** D

**NO.11** Which internal Cisco ISE component reduces demand on JVM memory by limiting the number of devices the profiler handles?

- A.** maxEndpointsInLocalDb
- B.** eventHandlerQueueSize
- C.** forwarderQueueSize
- D.** NetworkDeviceEventHandler

**Answer:** C

Explanation

To ensure that the profiler does not increase the JVM memory utilization and prevent JVM to go out of memory and restart, limits are applied to the following internal components of the profiler:

\*Endpoint Cache-Internal cache is limited in size that has to be purged periodically (based on least recently used strategy) when the size exceeds the limit.

\*Forwarder-The main ingress queue of endpoint information collected by the profiler.

\*Event Handler-An internal queue that disconnects a fast component, which feeds data to a slower processing component (typically related to a database query).

Cisco ISE Profiler Queue Size Limits

\*forwarderQueueSize = 5000 (endpoint collection events)

\*eventHandlerQueueSize = 10000 (events)

[https://www.cisco.com/c/en/us/td/docs/security/ise/1-](https://www.cisco.com/c/en/us/td/docs/security/ise/1-3/admin_guide/b_ise_admin_guide_13/b_ise_admin_guide_sample_chapter_010101.html)

[3/admin\\_guide/b\\_ise\\_admin\\_guide\\_13/b\\_ise\\_admin\\_guide\\_sample\\_chapter\\_010101.html](https://www.cisco.com/c/en/us/td/docs/security/ise/1-3/admin_guide/b_ise_admin_guide_13/b_ise_admin_guide_sample_chapter_010101.html)

**NO.12** Refer to the exhibit.

```
Switch(config)# aaa new-model
Switch(config)# aaa authorization network default local
group radius
```

You must configure the switch to accept downloadable ACLs from a Cisco ISE server which two commands do you run to complete the configuration? (Choose two)

- A.** ip device tracking
- B.** aaa authentication dot1x default group radius
- C.** dot1x system-auth-control
- D.** radius server vsa send authentication
- E.** radius-server attribute 8 include-in-access-req

**Answer:** B,C

**NO.13** Which two features must be used on Cisco ISE to enable the TACACS+ feature? (Choose two)

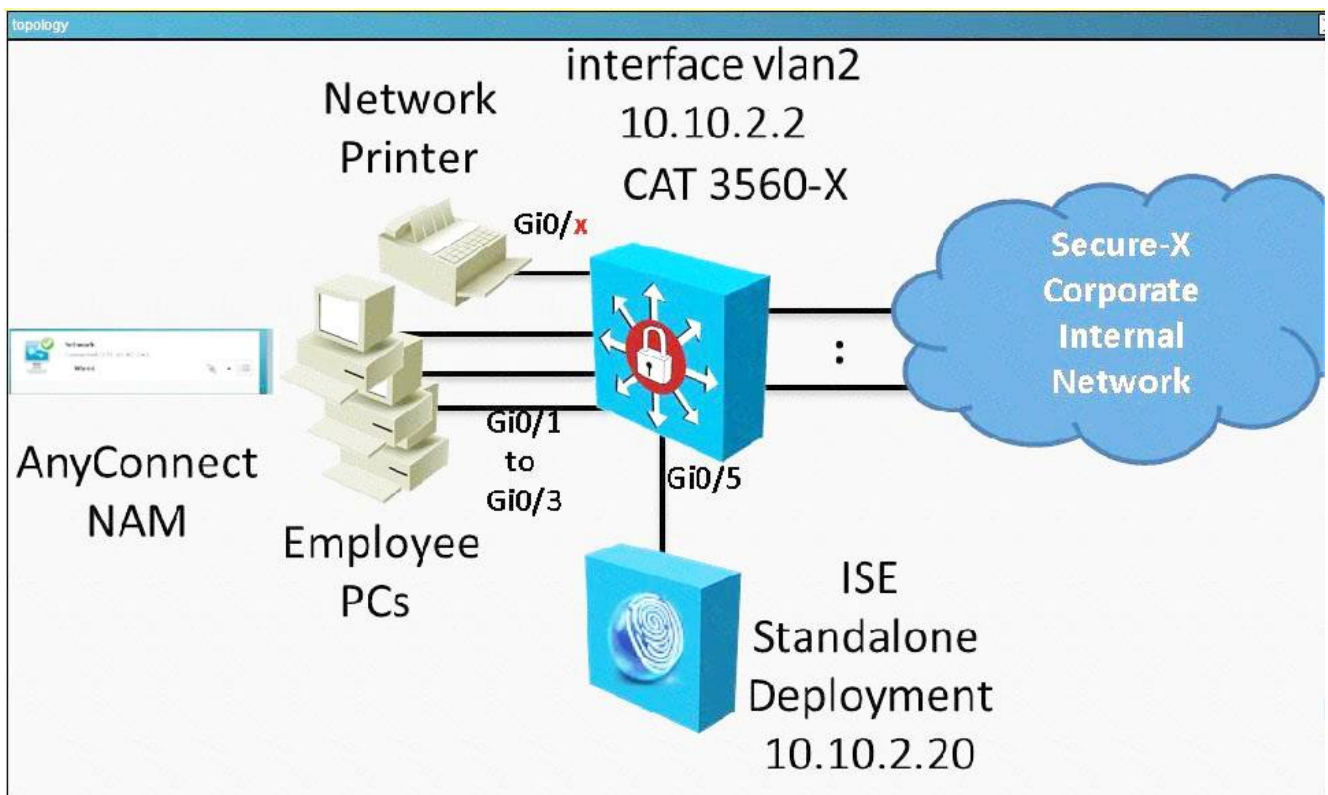
- A.** Enable Device Admin Service
- B.** TACACS Server Sequence
- C.** Device Administration License
- D.** TACACS Command Sets

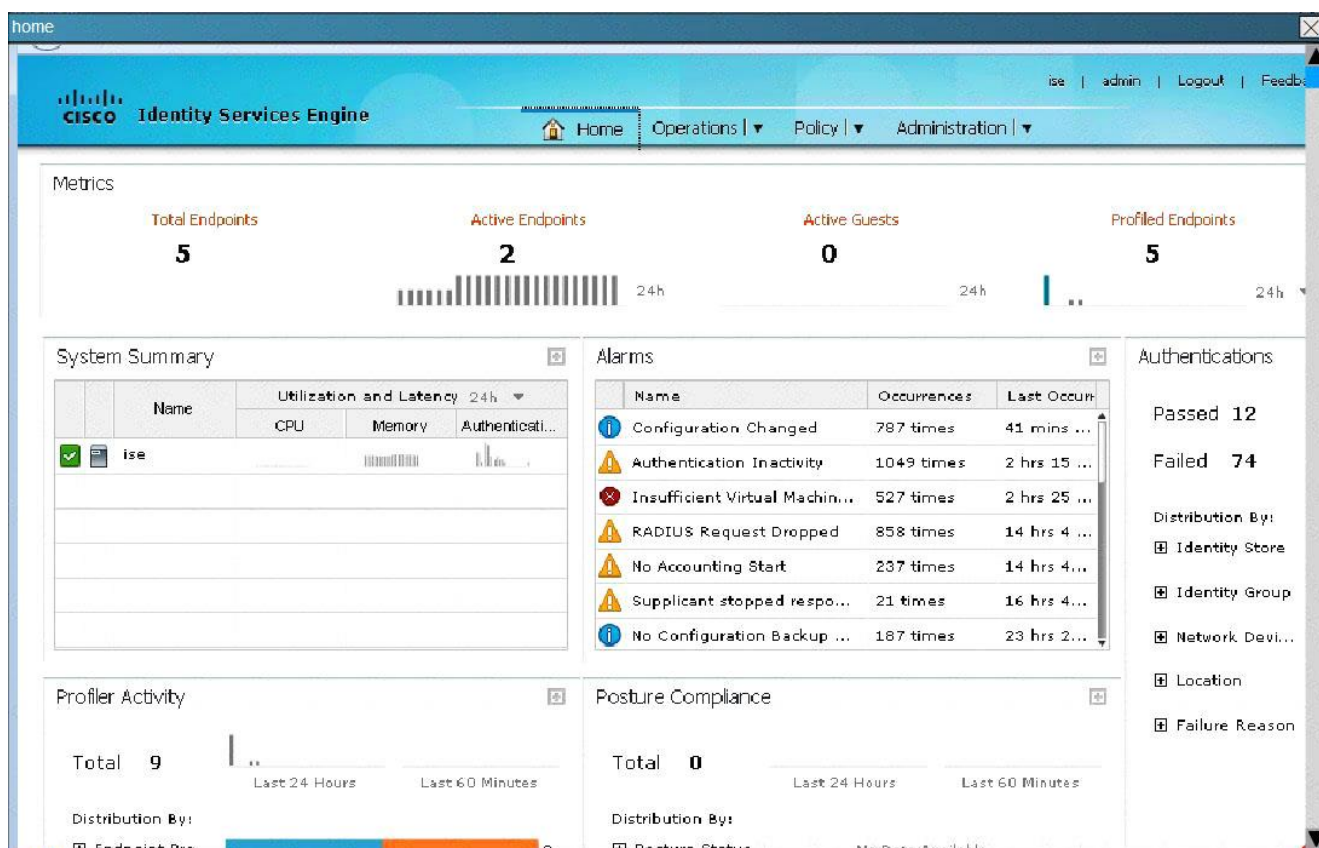
**E. TACACS External Servers****Answer:** A,C**NO.14** What is the IEEE security standard for MACsec?

- A. 802.10
- B. 802.15
- C. 802.1ae
- D. 802.1ac

**Answer:** C

**NO.15** In this simulation, you are task to examine the various authentication events using the ISE GUI. For example, you should see events like Authentication succeeded. Authentication failed and etc...





Which four statements are correct regarding the event that occurred at 2014-05-07 00:19:07.004? (Choose four.)

- A. The it1 user was successfully authenticated against AD1 identity store.
- B. The IT\_Corp authorization profile were applied.
- C. The it1 user machine has been profiled as a Microsoft-Workstation.
- D. The it1 user was authenticated using MAB.
- E. The it1 user machine has passed all the posture assessement tests.
- F. The it1 user supplicant used the PEAP (EAP-MSCHAPv2) authentication method.
- G. The it1 user was matched to the IT\_Corp authorization policy.

**Answer:** A,C,F,G

Explanation

Here are the details shown for this event:

The screenshot displays a Cisco ISE event log for a successful authentication. The event is titled "it1 succeed" and shows the following details:

Overview	
Event	5200 Authentication succeeded
Username	it1
Endpoint Id	44-03-A7-62-41-7F
Endpoint Profile	Microsoft-Workstation
Authorization Profile	IT_Corp
AuthorizationPolicyMatchedRule	IT users
ISEPolicySetName	Default
IdentitySelectionMatchedRule	Default

Authentication Details	
Source Timestamp	2014-05-07 00:19:07.003
Received Timestamp	2014-05-07 00:19:07.004
Policy Server	ise
Event	5200 Authentication succeeded
Failure Reason	
Resolution	
Root cause	
Username	it1
User Type	
Endpoint Id	44-03-A7-62-41-7F
Endpoint Profile	Microsoft-Workstation
IP Address	10.10.9.17
Identity Store	AD1
Identity Group	Workstation
Audit Session Id	0A0A0202000000D1070C4295
Authentication Method	dot1x
Authentication Protocol	PEAP (EAP-MSCHAPv2)

Other Attributes	
NAS Port Type	Ethernet
Authorization Profile	IT_Corp
Posture Status	NotApplicable
Security Group	
Response Time	10
ConfigVersionId	8
DestinationPort	1646
Protocol	Radius
NAS-Port	50001
Framed-MTU	1500
State	37CPMSessionID=0A0A0202000000D1070C4295; 27SessionID=ise/188683442/365;
AcSSessionID	ise/188683442/365
SelectedAuthenticationIdentityStoresAD1	
SelectedAuthenticationIdentityStoresInternal Users	
ADDomain	secure-x.local
AuthorizationPolicyMatchedRule	IT users
CPMSessionID	0A0A0202000000D1070C4295
EndPointMACAddress	44-03-A7-62-41-7F
ISEPolicySetName	Default
AllowedProtocolMatchedRule	Dot1X
IdentitySelectionMatchedRule	Default
HostIdentityGroup	Endpoint Identity Groups:Profiled:Workstation
Location	Location#All Locations#HQ

**NO.16** Which description of SXP is true?

- A. applies SGT along every hop in the network path
- B. removes SGT from every hop in the network path
- C. propagates SGT on a device upon which SGT inline tagging is unsupported
- D. propagates SGT on a device upon which SGT inline tagging is supported

**Answer:** C

Explanation

Explanation/Reference

You can use the SGT Exchange Protocol (SXP) to propagate the Security Group Tags (SGTs) across network devices that do not have hardware support for Cisco TrustSec.

**NO.17** What type of identity group is the Blacklist identity group

- A. quarantine
- B. denied systems
- C. endpoint
- D. blackhole
- E. user

**Answer:** C

**NO.18** Which advantage is provided by using Active Directory as an external identity source?

- A. It supports two factor-authentication using a PIN and a token.
- B. It supports SAML for single sign-on.

- C. It uses EAP chaining with EAP-TLS to authenticate users and computers.
- D. It uses EAP chaining with EAP-FAST to authenticate users and computers.

**Answer:** D